

## Headstock with electric actuator – double spindle - application without concrete ceiling -

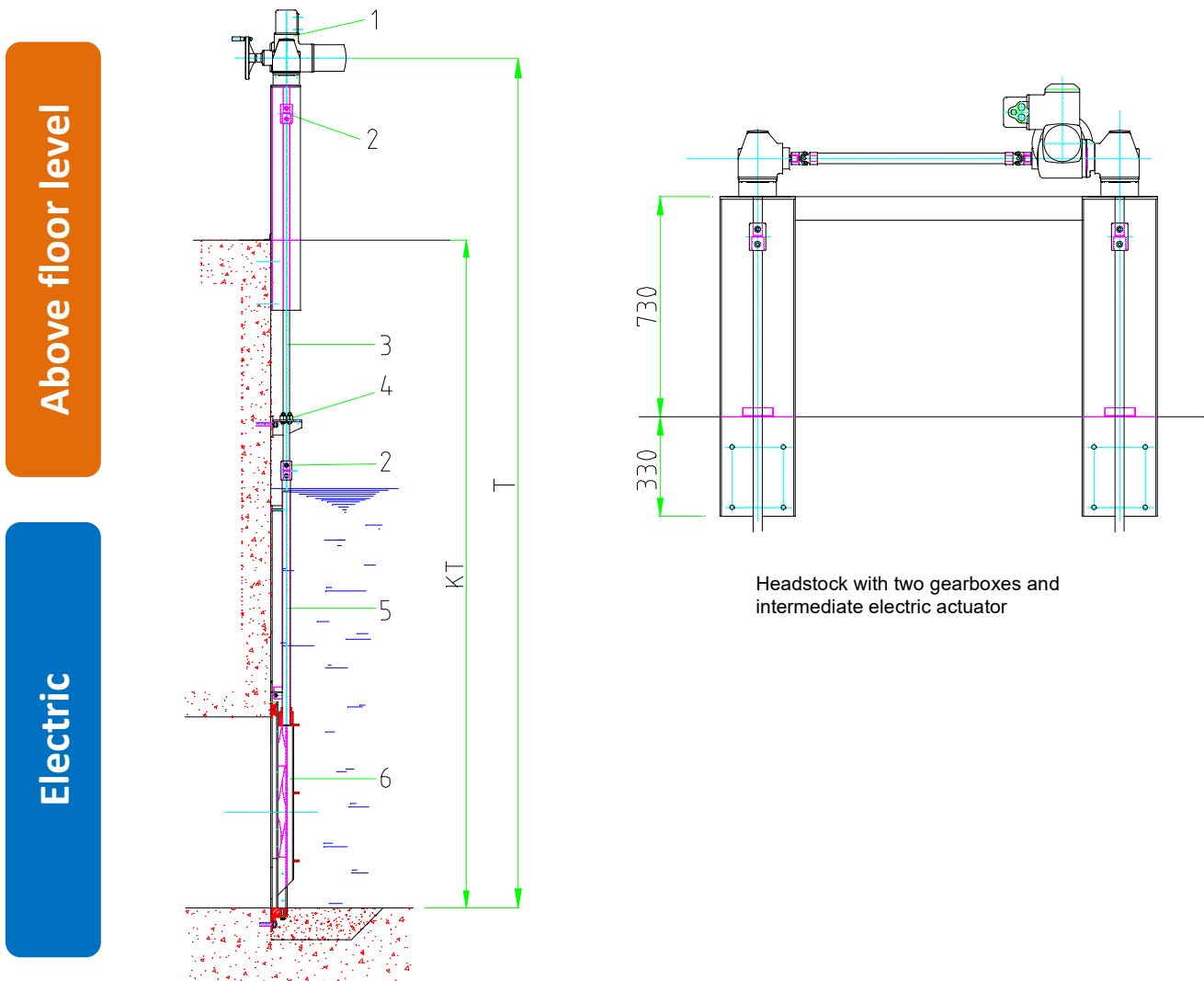


Figure with Penstock C20-Series

**KEY**

- 1 Headstock with electric actuator
- 2 Coupling
- 3 Spindle extension
- 4 Spindle guide (only if required)
- 5 Spindle
- 6 Penstock

- T Installation depth
- KT Channel depth

**Material:**

Headstock made from S.S. 316 / 304  
 Driveshaft made from S.S. 316 / 304  
 Fastening elements made from S.S. 316

**EI. actuator:** AUMA, Drehmo, Rotork Controls  
 or any other requested brand

**Gearbox:** AUMA, Rotork Gears  
 or any other requested brand

**Optional:** Features of electric actuator acc.  
 to requirements