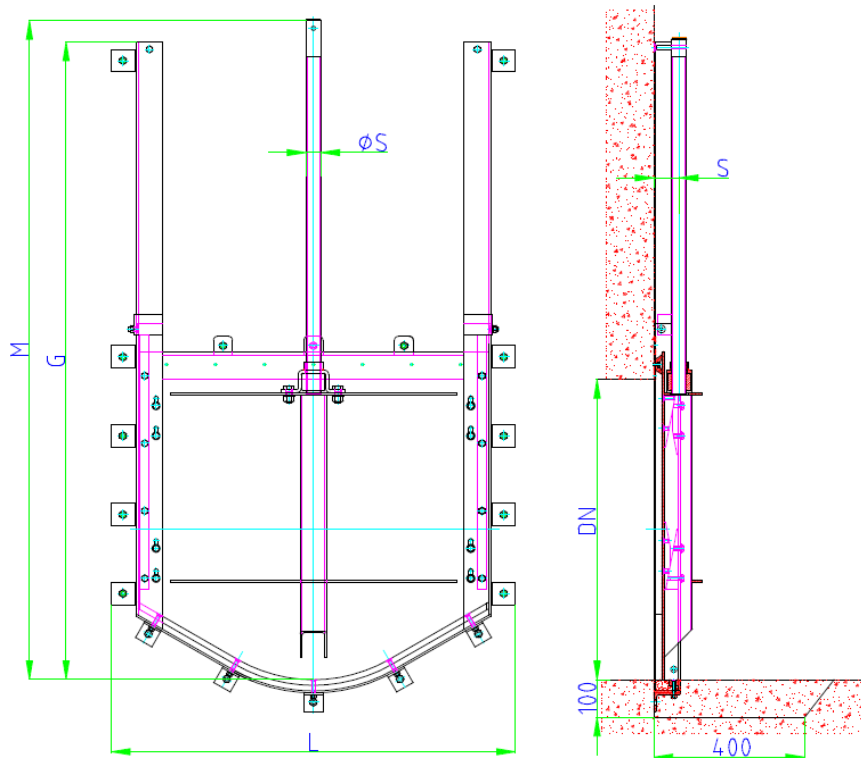


Dimension DN 700 to 1200 - Wall fixing



Dimension	L	G	M	S	ØS	Weight [kg]
DN 700	920	1506	1560	65	40	95
DN 800	1020	1706	1760	65	40	113
DN 900	1120	1906	2000	65	40	130
DN 1000	1220	2106	2175	65	40	161
DN 1200	1420	2506	2650	75	44	200

Design: TESACO, acc. to DIN 19569-4, BS 7775:2005, ANSI/AWWA C561-04, 4-face sealing

Material: The following standard material combinations are available:

- Type: A4 - Frame and door fabricated from S.S. 316
- Type: A2 - Frame and door fabricated from S.S. 304

- Door seal made of waste water resistant neoprene
- Wall seal made of Silicone (to be provided locally)
- Wedge components made of plastic PA
- Spindle nut made of corrosion resistant bronze
- Spindle made of stainless steel type 316
- Fastening elements made from S.S.316

Corrosion protection: Stainless steel pickled and passivated

Optional curved

