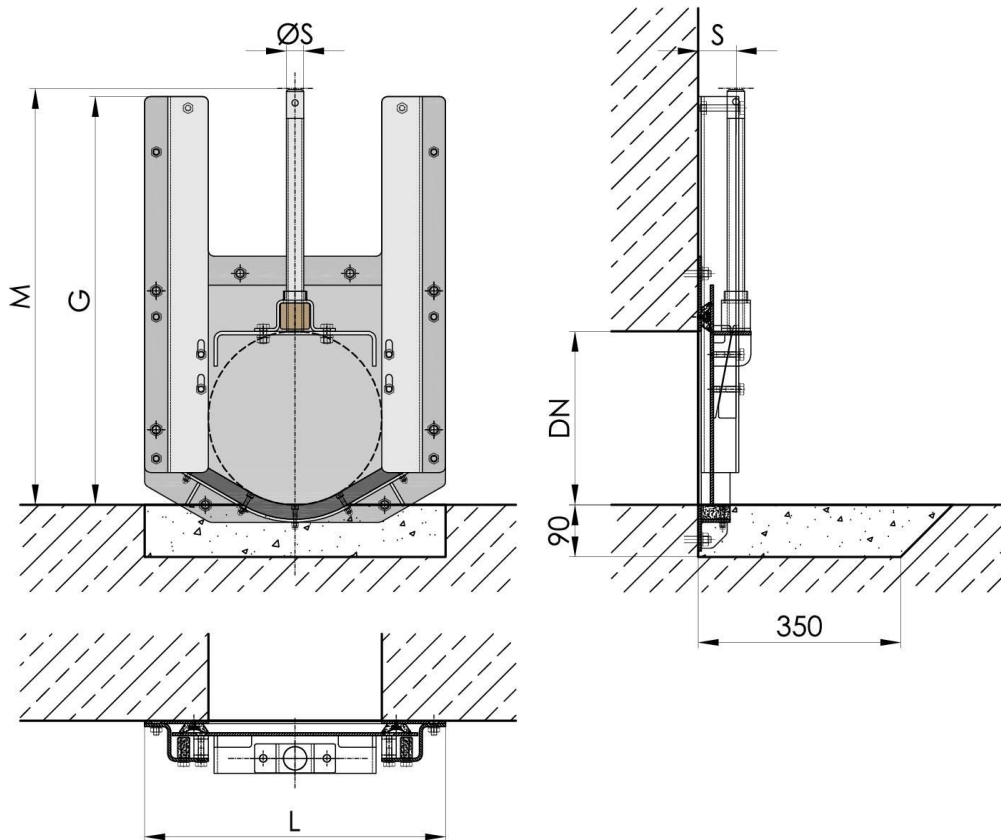


Dimension DN 150 to 600 - Wall fixing



Dimension	L	G	M	S	ØS	Weight [kg]
DN 150	330	390	420	65	24	12
DN 200	380	490	530	65	24	15
DN 250	430	575	620	65	24	21
DN 300	520	706	720	65	30	33
DN 400	620	906	940	65	30	47
DN 500	720	1106	1140	65	36	62
DN 600	820	1306	1350	65	36	81

Design: TESACO, acc. to DIN 19569-4, BS 7775:2005, ANSI/AWWA C561-04, 4-face sealing

Material: The following standard material combinations are available:

Type: A4 - Frame and door fabricated from S.S. 316
 Type: A2 - Frame and door fabricated from S.S. 304

Door seal made of waste water resistant neoprene
 Wall seal made of Silicone (to be provided locally)
 Wedge components made of plastic PA
 Spindle nut made of corrosion resistant bronze
 Spindle made of stainless steel type 316
 Fastening elements made from S.S.316

Corrosion protection: Stainless steel pickled and passivated

Optional with curved shaft adapter

